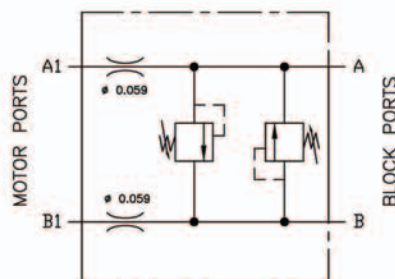
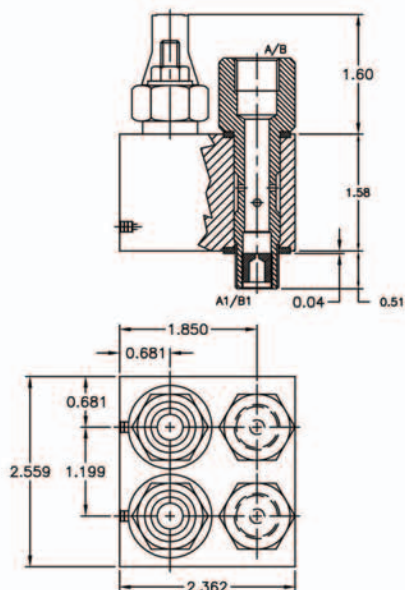


EBMM MOTORS

OPTIONALS – DUAL CROSS OVER RELIEF VALVE



SPECIFICATIONS

MAX.WORKING PRESSURE: 3263 psi

SPRING RANGE: 508 to 2030 psi

PRESSURE DROP: 1450 psi (0 TO 0.793 GPM)

SPRING INCREASE: 14.5 psi / turn

MAX.FLOW: 0.793 GPM

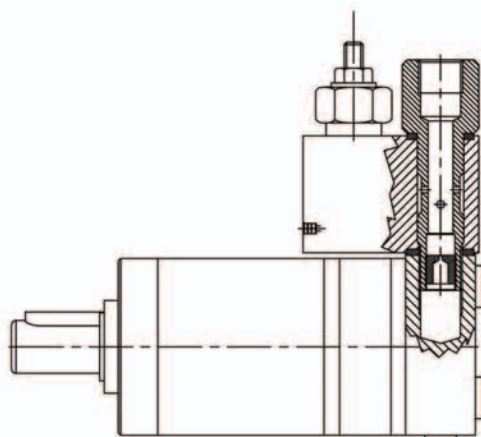
SPRING SETTING (100%): 0.264 GPM

APPLICATIONS

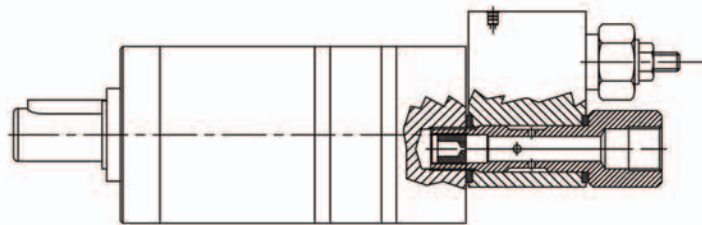
PROTECTION OF MOTORS AGAINST SHAFT

BLOCKAGE OR OVERCHARGE BY ADJUSTING

MAXIMUM PRESSURE OF OPERATION



90 PORTS

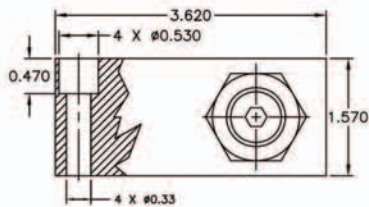
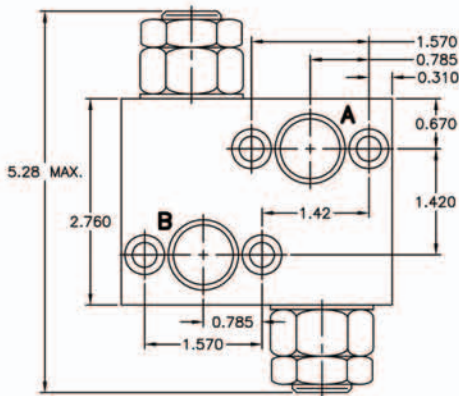


BACK PORTS

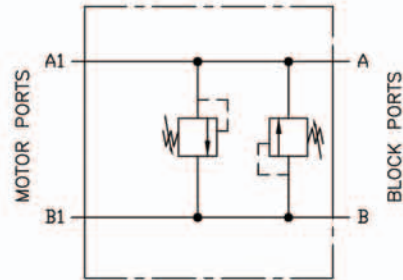


EBMP MOTORS

OPTIONALS – DUAL CROSS OVER RELIEF VALVE



PORTS A AND B: 7/8 – 14UNF



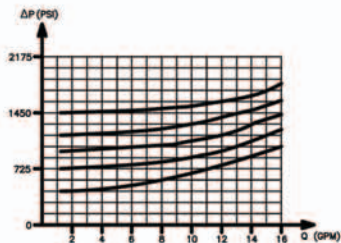
PROTECTION OF MOTORS AGAINST SHAFT LOCKAGE
OR OVERCHARGE BY ADJUSTING MAXIMUM PRESSURE
OF OPERATION.

SPECIFICATIONS

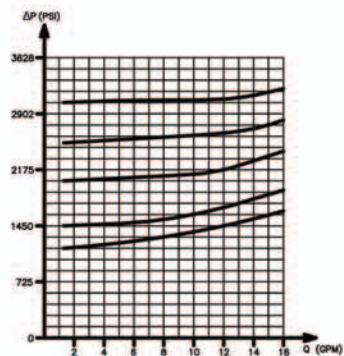
RATED WORKING PRESSURE: 435 to 1450 psi
1160 to 3050 psi

MAX.FLOW: 16 GPM

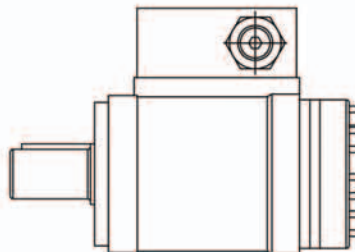
PERFORMANCE



RANGE: 435 to 1450 psi



RANGE: 1160 to 3050 psi

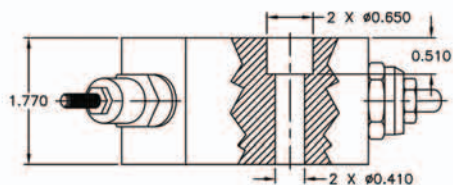
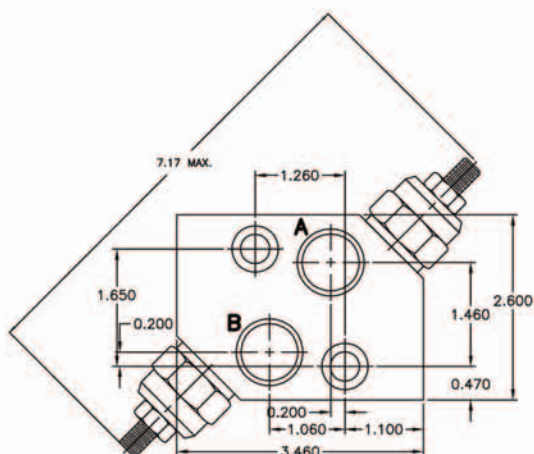


NOTE: BLOCKS ARE INSTALLED DIRECTLY ON EBMP MOTORS WITH FOUR BOLTS 5/16-18UNC.

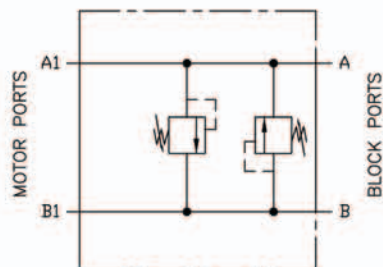


EBMS MOTORS

OPTIONALS — DUAL CROSS OVER RELIEF VALVE



PORTS A AND B: 7/8 - 14UNF



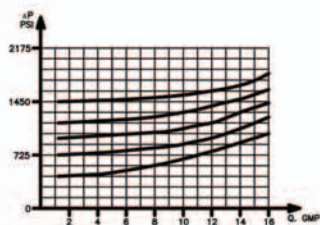
PROTECTION OF MOTORS AGAINST SHAFT BLOCKAGE
OR OVERCHARGE BY ADJUSTING MAXIMUM PRESSURE
OF OPERATION

SPECIFICATIONS

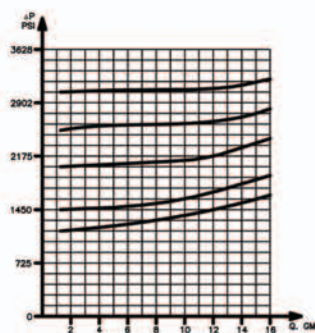
RATED WORKING PRESSURE: 435 to 1450 psi
1160 to 3050 psi

MAX.FLOW: 16 GPM

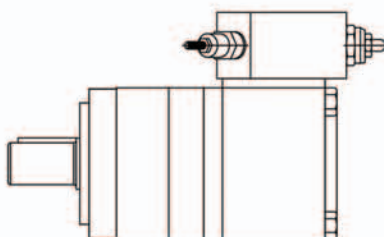
PERFORMANCE



RANGE: 435 to 1450 psi



RANGE: 1160 to 3050 psi



NOTE: BLOCKS ARE INSTALLED DIRECTLY ON EBMS MOTORS WITH FOUR BOLTS 3/8-16UNC.